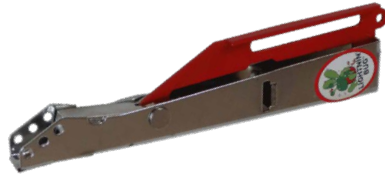


Lightnin' Bug® Torch Lighter

- Multi-Spark discharge.
- Ignites almost all industrial fuel gases.
- Never needs flints, batteries, or recharging.



ITEM NO.	DESCRIPTION	1	5	10	20
902100	Torch Lighter	\$15.56	\$14.69	\$13.92	\$13.23

Spark Lighters

- Reliable torch spark lighters with dependable ignition.
- Available in single flint or triple flint options.



ITEM NO.	DESCRIPTION	1	10	20	40
902010	Single Flint, Carded	\$4.05	\$3.83	\$3.62	\$3.44
902000	Single Flint, Bulk 10/Box	3.14	3.14	2.97	2.81
902030	Triple Flint, Carded	5.97	5.64	5.34	5.08
902020	Triple Flint, Bulk Packed	5.40	5.10	4.83	4.59
902050	Triple Flint w/Flints, Carded	9.62	9.09	8.61	8.18

Spark Lighters

- Reliable torch spark lighters with dependable ignition.
- Available in single flint or triple flint options.



ITEM NO.	DESCRIPTION	1	10	20	40
900100	BEST WELDS Single Flint	\$2.16	\$2.03	\$1.92	\$1.82
900300	BEST WELDS Triple Flint	3.31	3.12	2.95	2.79

Spark Lighter Flints

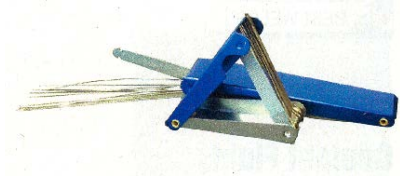
- These flints are guaranteed to fit perfectly on Shur-Lite lighters, and to remain seated in the flint holder.
- Larger size for longer life.



ITEM NO.	DESCRIPTION	1 card	10	20	30
902013	Single flint, 5 per card	\$1.64	\$1.55	\$1.47	\$1.40
902036	Triple flint, 4 per card	3.91	3.69	3.50	3.32

Torch Tip Cleaner

- Constructed of stainless steel.
- Tapered ends for easy cleaning.
- Includes case with file.
- Diameters: .014, .018, .021, .024, .028, .032, .035, .037, .039, .042, .048, .055, & .062"
- Size Group: #6 thru #25



ITEM NO.	DESCRIPTION	1	5	10	20
908540	Tip Cleaner	\$2.88	\$2.88	\$2.57	\$2.44

MIG Welding Pliers

- Specially designed pliers to assist in wire cutting, tip and nozzle removal and installation, spatter removal and more.
- The IRWIN pliers features induction-hardened cutting edges to stay sharp longer.
- A very versatile and almost indispensable tool to keep handy at every welding station.



ITEM NO.	DESCRIPTION	1	5	10	20
903520	BEST WELDS 8"	\$21.71	\$20.50	\$19.43	\$18.45
222180	IRWIN 10"	23.44	22.14	20.97	19.93

Magnetic Holders

- These powerful magnetic holders come in handy in countless welding/work-holding applications.



ITEM NO.	DESCRIPTION	1	5	10	15
900061	Medium: 45 lb. capacity	9.40	8.87	8.41	7.99
900063	Large: 80 lb. capacity	13.67	12.91	12.23	11.62
900065	X-Large: 95 lb. capacity	18.01	17.01	16.11	15.31

Electrode Holders – High Tong Type

- Lever designed for better hand clearance and hold.
- Made from high quality materials for both high conductivity and improved cable connections.
- Ergonomically designed heavy duty shock-proof nylon handle.
- Body material: Brass



ITEM NO.	AMPS	ELEC-TRODE CAPACITY	CABLE CAPACITY	LENGTH	PRICE EACH			
					1	5	10	20
903010	200	4mm	3/0	8.46"	\$16.24	\$15.34	\$14.53	\$13.81
903013	250	5mm	1/0	9.25"	17.85	16.86	15.97	15.17
903016	300	6.3mm	1/0	10.04"	21.68	20.47	19.40	18.43

Steel Ground Clamps

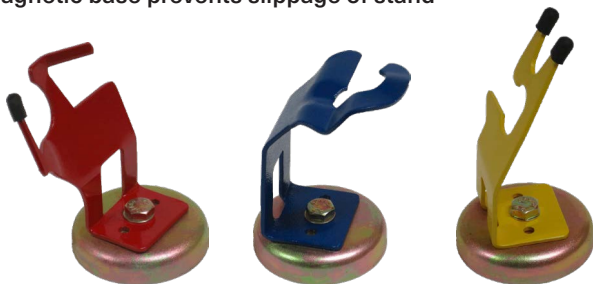
- Zinc-plated steel ground clamp.
- Large hex screw cable connection assures safe connection every time.
- Broad contact surface area ensures excellent electrical contact.



ITEM NO.	AMPS	CABLE CAPACITY	JAW OPENING	THROAT DEPTH	PRICE EACH			
					1	5	10	20
903025	200	#2	1"	3.28"	\$5.80	\$2.56	\$2.43	\$2.31
903028	300	1/0	1.5"	4.57"	8.78	8.27	7.82	7.41
903031	500	3/0	2"	6.20"	12.64	11.91	11.25	10.67

Magnetic Torch Stands / Electrode Holders

- Helps keep torch away from table clutter
- Protects torch head from inadvertent damage
- Magnetic base offers great flexibility, as it attaches to any steel surface
- Magnetic base prevents slippage of stand



ITEM NO.	TORCH	COLOR	1	5	10	20
903070	Electrode Holder	Red	\$18.25	\$17.24	\$16.33	\$15.51
903073	Mig Gun	Blue	16.12	15.23	14.42	13.70
903076	Tig Torch	Yellow	16.33	15.42	14.61	13.88

TWECO Style Ground Clamps

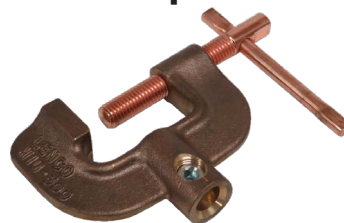
- Contoured handle lever for easy jaw opening.
- Large contact area assures positive grounding.
- Conductor body holds the cable securely.



ITEM NO.	AMPS	CABLE CAPACITY	JAW CAPACITY	THROAT DEPTH	PRICE EACH			
					1	5	10	20
903040	150	#2	1.5"	2.52"	\$14.84	\$14.01	\$13.27	\$12.61
903055	200	1/0	2"	3.50"	19.27	18.20	17.24	16.38
903061	200	#2	1"	2.64"	41.82	39.50	37.42	35.55
903043	300	1/0 - 3/0	1.5"	3"	22.18	20.95	19.84	18.85
903058	300	3/0	2"	3.86"	28.61	27.02	25.60	24.32
903046	500	2/0 - 4/0	1.5"	3.50"	31.51	29.76	28.19	26.78

LENCO® MIG 300 Ground Clamp

- Powerful bite and swivel pad for low-resistance ground connections.
- Cable capacity 1/0 to 2/0, jaw opening 2", throat depth 1-1/8".



ITEM NO.	DESCRIPTION	1	2	4	8
903483	300 amp ground clamp	\$48.70	\$46.00	\$43.58	\$41.40

Magnetic Holders & Ground Clamps



- These magnets offer you more angles in one product than any other magnetic angles.
- Other magnets often don't turn off completely – Magswitch will.
- The magnets will stay CLEAN for years of use.
- MINI with ground clamp grounds and holds simultaneously.
- Each magnet offers several common angles: 45/135°, 60/120°, 75/105°, and 90°



	Mini	Mini Multi	Mini Multi w/ 300 Amp Ground	Multi Angle 400
Part #	8100352	8100350	8100351	8100438
Magnet Strength	90 lbs	90 lbs	150 lbs	400 lbs
Height	2.1"	2.5"	3.4"	3.8"
Width	1.2"	1.2"	1.6"	2.6"
Length	2.3"	2.8"	3.6"	5.1"
Weight	0.4 lbs	0.4 lbs	1.1 lbs	2.6 lbs

ITEM NO.	MODEL	1	2	4	8
903250	MINI	\$40.49	\$38.24	\$36.23	\$34.42
903260	MINI MULTI	60.19	56.85	53.86	51.16
903263	MINI MULTI w/300 AMP GR	74.99	70.82	67.09	63.74
903266	MULTI ANGLE 400	202.49	191.40	181.46	172.50



Silver-Streak® Metal Marker & Refill

- This metal marker is far superior to soapstone.
- Marks are resistant to rubbing/burning/blowing off surface.
- Highly visible marks illuminate while cutting or welding.
- Marks on oily, wet, or rusty metals.
- Use for steel and iron, aluminum, and stainless steel.
- Durable, shatter-resistant mechanical holder prevents stick breakage and features a convenient built-in sharpener and metal pocket clip.
- One lead stick included.
- Refill pack includes 6 lead sticks.

*** OUR MOST
POPULAR METAL
MARKER!**



ITEM NO.	DESCRIPTION	1	6	12	24	48
964700	Silver-Streak marker	\$9.94	\$9.39	\$8.89	\$8.45	\$8.05
964705	Refills (pack of 6 leads)	7.22	6.82	6.46	6.14	5.85

Valve Action® Paint Markers

- For general marking.
- Fast-drying permanent paint for immediate handling.
- Dura-Nib medium bullet tip resists wear to provide long marking life.
- Durable metal barrel and clip-cap reduce breakage and store easily in pocket.



ITEM NO.	COLOR	MARK SIZE	1	12	48	96
964251	White	1/8"	\$3.39	\$3.21	\$3.04	\$2.89
964256	Yellow	1/8"	3.39	3.21	3.21	2.89
964261	Red	1/8"	3.39	3.21	3.04	2.89
964266	Black	1/8"	3.39	3.21	3.04	2.89
			1	2	3	4
964250	24 pc. Countertop Display: 8 white, 8 yellow, 4 red, 4 black		83.12	78.91	75.11	71.66
	\$109.57					

Markal® PRO Mechanical Holder

- Extended, needle-nose tip for tight and hard-to-reach areas.
- Heavy-duty metal construction for use in the toughest jobs.
- 1-click advance for just the right amount of lead.
- Easily refillable for continued use.
- Built-in sharpener for precise marks.
- Use on metal, wood, plastic, PVC, tile, ceramic, glass, stone, block and paper.
- Industries: construction, welding, metal fabrication, maintenance services, lumber and timber industry.
- Use only with Markal PRO refills.
- One starter lead (graphite) included with holder.
- Refill packs includes 6 lead sticks.



ITEM NO.	DESCRIPTION	1	3	6	12	24
964730	PRO marker + 1 lead	\$18.72	\$17.55	\$16.51	\$15.60	\$14.78
PRO REFILLS, PACK OF 6		1 pack	3	6	12	24
964733	Silver Streak®	22.34	21.10	19.99	18.99	18.08
964736	Red Riter®	12.06	-	11.39	10.79	10.25
964739	Multi-Pack	11.82	-	11.17	10.58	10.05

PRO-LINE® HP Paint Markers

- For oily surface marking.
- Unique paint formula resists spreading and dries quickly through oily surfaces to leave precise, permanent marks.
- Durable metal barrel and nib reduce breakage for longer marking life.
- Easy-to-grip clip-cap allows for convenient pocket storage.



ITEM NO.	COLOR	MARK SIZE	1	12	48	96	144
964511	White	1/8"	\$4.00	\$4.00	\$3.58	\$3.40	
964516	Yellow	1/8"	-	3.78	3.58	3.40	
964521	Red	1/8"	4.00	3.78	3.58	3.40	
964526	Black	1/8"	4.00	3.78	3.58	3.40	
964531	Orange	1/8"	4.00	3.78	3.58	3.40	
964536	Silver	1/8"	4.58	4.33	4.10	3.90	
			1	12	24	48	
964401	White	FINE 1/16"	4.09	3.86	3.66	3.48	
964406	Green	FINE 1/16"	4.09	3.86	3.66	3.48	

DURA-INK® Markers

- Industrial-grade ink markers for metal, cardboard, plastic, glass, lumber, cloth etc.
- Durable, lightweight, impact-resistant barrels with tough tips that resist spreading or mushrooming.



ITEM NO.	COLOR	MARK SIZE	1	12	24	48	96
964011	Black	1mm - MICRO	\$3.81	\$3.60	\$3.41	\$3.24	-
964021	Black	1/16" - 3/16"	2.09	1.97	-	1.87	1.77
964041	Black	3/8" - 5/8"	4.77	4.51	4.27	4.06	-



MARKAL

Welder's Pencils

- Makes torch-resistant marks that illuminate when cutting or welding.
- Ideal for metal layout and fabrication work.
- Sold per piece, in package quantity only (12 per box).



ITEM NO.	DESCRIPTION	12	36	72	144
964710	Red-Riter® red pencil	\$0.82	\$0.78	\$0.74	\$0.74
964715	Silver-Streak® silver pencil	0.82	0.78	0.78	0.70

Sharpie® Original Markers

- Sharpie Original fine point black permanent markers, in a 36-count canister for countertop sales.



ITEM NO.	DESCRIPTION	1	2	4	8
965059	36 count display canister	\$44.23	\$41.84	\$39.70	\$37.76

Sharpie® PRO Industrial Markers

- A professional permanent marker that withstands extreme heat or steam up to 500° F.
- Fine point.
- Sold per piece, in package quantity only (12 per box).



ITEM NO.	DESCRIPTION	12	36	72	144
964000	PRO Industrial, black	\$1.91	\$1.81	\$1.71	\$1.63



J-B Weld

- J-B WELD is an easy, convenient, and inexpensive alternative to welding. J-B Weld will bond to virtually any clean, dry surface including: iron, steel, copper, aluminum, brass, bronze, pewter porcelain, ceramic, marble, glass, concrete, fiberglass, wood, some plastics and more.
- STEELSTIK formula is a hand knead-able, steel-reinforced epoxy putty adhesive/sealant that will plug holes and make repairs on wet and dry surfaces. Will cure even when completely submerged in water or gasoline.
- MARINE WELD formula is as strong as steel and water- and weather-proof.
- KWIK formula has a set time of only 4 minutes.
- WATER WELD formula is an epoxy putty that will plug holes and make permanent repairs in moist surface or underwater applications. Will even repair leaking fuel tanks. Approved for use with potable water.

ITEM NO.	DESCRIPTION	1	6	12	24
228700	ORIGINAL COLD WELD™ Formula	\$6.80	\$6.42	\$6.08	\$5.78
228703	STEELSTIK™ Universal Epoxy Putty	6.37	6.02	5.70	5.42
228706	MARINE WELD™ Welding Compound	5.88	5.56	5.26	5.00
228709	KWIK® Welding Compound	5.00	6.52	6.17	5.87
228712	WATER WELD Epoxy Stick	6.89	6.50	6.16	5.85
		1	3	6	9
228715	INDUSTRO WELD Cold Welding Compound, (2) 5 oz Tubes - Boxed, Price Per Box	12.09	11.42	10.82	10.28



Metabo® W9-115 Quick Angle Grinder

- Powerful 8.5 amp Long Life motor with patented dust guard, up to 20% more high overload capacity and 50% more torque.
- Ergonomically designed body and handle make for lower fatigue and increased productivity.
- The Metabo M-Quick System allows for quick disc change at the touch of a button, without tools.
- Features tool-free and twist-proof adjustable guard.
- Metabo S-automatic Torque Limiting Clutch minimizes kick-back to the lowest level when the disc jams unexpectedly – for maximum user protection and swift progress.
- Gear housing can be mounted turned in 90° steps for left-handed or cutting operations.
- No-load RPM: 10500, At rated load RPM: 7500, Torque: 22 in-lbs
- Spindle thread: 5/8"-11 UNC, Weight: 4.6 lbs [w/o cord], Cord length: 8'



ITEM NO.	DESCRIPTION	1	2	4	6
220410	4-1/2" Angle Grinder	\$208.93	\$197.63	\$187.50	\$178.35



HOLDING STRONG SINCE 1941

For over 70 years WILTON® has been making some of the highest quality vises available. From the jumbo USA-made Machinist Vise with a jaw capacity of 12", to the smallest vise with a vacuum-mount base, Wilton® is a brand that is designed to be relied on. Wilton® also offers a wide range of L-clamps & C-clamps in addition to pipe wrenches and the new unbreakable Wilton® B.A.S.H. sledge hammers. Call us for more information on any of these Wilton® products.



Combo Pipe & Bench Vise

- Combo Pipe & Bench Vise - Wilton's Workhorse. This serious duty vise features the Wilton Bullet sealed design; fully enclosed to protect all internal components and lifetime lubricated for trouble free service. Virtually indestructible 60,000 PSI ductile iron body, two times the strength of grey casted vises. Precision slide bar keyed for a .003" fit, eliminating movement in the front jaw regardless of opened distance. Extra-deep throat for large jobs. Self-centering pipe jaws are ideal for irregularly shaped objects. Longer spindle nut, larger anvil, and 4 bolt mounting pattern sets this vise apart from average. Ideal for plant maintenance, oil field service, heavy construction, mechanical trades, steel fabrication.

*** LIFETIME WARRANTY!**



ITEM NO.	MODEL	JAW WIDTH	THROAT DEPTH	MAX OPENING	PIPE JAW CAPACITY	1	2	3	4
288001	C-0	3-1/2"	4-1/2"	5"	1/8" - 2-1/2"	\$988.75	\$941.67	\$941.67	\$859.78
288002	C-1	4-1/2	4-3/4	6	1/8" - 3-1/2"	1,391.46	1,342.35	1,296.59	1,253.85
288003	C-2	5	5-5/16	7	1/8" - 4-1/2"	1,803.66	1,740.00	1,680.68	1,625.27
288004	C-3	6	6-5/8	9	1/4" - 6"	2,642.68	2,549.41	2,462.50	2,381.32



Tradesman Vise

- The Tradesman vise is the #1 industrial bench vise in the USA. It features Wilton's trademarked 'Bullet' design which completely seals internal components from dust and debris. It also features a 60,000 PSI ductile iron body which makes this vise virtually indestructible with 2x the strength of grey casted vises. Reversible jaw inserts give you the option of standard serrated jaws for extra grip or smooth to prevent marring on softer surfaces. Steel pipe jaws grip irregular objects. Large anvil takes the beating of forming and shaping materials. Precision slide bar provides dependable operation. Ideal for metal fabrication, automotive, construction sites, service and MRO, utility.

*** LIFETIME WARRANTY!**



ITEM NO.	MODEL	JAW WIDTH	THROAT DEPTH	MAX OPENING	PIPE JAW CAPACITY	1	2	3	4
288011	1745	4-1/2"	3-1/4"	4"	1/4" - 2-1/2"	\$988.75	\$941.67	\$898.86	\$859.78
288012	1755	5-1/2	3-3/4	5	1/4" - 3"	710.00	676.19	645.45	617.39
288013	1765	6-1/2	4	6-1/2	1/4" - 3-1/2"	791.25	753.57	719.32	688.04
288014	1780A	8	4-3/4	7	1/8" - 3-1/2"	1,182.50	1,126.19	1,075.00	1,028.26



Mechanics Vise

- Built for serious mechanics. Features hardened steel jaws, sealed construction, industrial 360 degree locking swivel base, precision slide handle, and four mounting posts.
- **30,000 PSI DUCTILE IRON BODY:**
- Heavy-duty castings are built for rugged use and extended life
- **LIFETIME LUBRICATION:** Grease is permanently sealed in for trouble-free service
- **IDEAL FOR:**

Professional mechanics
Automotive maintenance
Maintenance and repair



ITEM NO.	MODEL	JAW WIDTH	THROAT DEPTH	MAX OPENING	PIPE JAW CAPACITY	1	2	3	4
288021	744	4"	3-7/16"	4-1/2	1/4" - 2"	\$710.00	\$676.19	\$645.45	\$617.39
288022	745	5	3-3/4	5-1/4	1/4" - 2-1/2"	404.05	383.33	364.63	347.67
288018	HI-VIS	5	3-3/4	5-1/4	1/4" - 2-1/2"	393.24	373.08	354.88	338.37
288023	746	6	4-1/8	5-3/4	1/4" - 3-1/2"	510.67	484.81	461.45	440.23
288019	HI-VIS	6	4-1/8	5-3/4	1/4" - 3-1/2"	532.00	505.06	480.72	458.62
288024	748A	8	4-3/4	8-1/4	1/4" - 3-1/2"	688.75	655.95	626.14	598.91



Reversible Mechanics Vise

- Similar to the above but with reversible jaws to open an incredible 11-3/4" (model WI-14800) when reversed.
- **30,000 PSI DUCTILE IRON BODY:**
- Heavy-duty castings are built for rugged use and extended life
- **LIFETIME LUBRICATION:**
- Grease is permanently sealed in for trouble-free service
- **DUAL ANVILS**
- Two working anvil surfaces for forming and shaping materials



ITEM NO.	MODEL	JAW WIDTH	THROAT DEPTH	MAX OPENING	PIPE JAW CAPACITY	1	2	3	4
288031	4500	5-1/2"	3-3/4" / 2-3/4"	6" / 9-3/4"	1/4" - 2"	\$312.16	\$296.15	\$281.71	\$268.60
288032	4600	6-1/2"	4" / 3"	8" / 9-3/4"	1/8" - 3-1/2"	391.89	371.79	353.66	337.21
288033	4800	8"	5" / 2-3/4"	9-1/2" / 11-3/4"	1/8" - 4-1/2"	462.67	439.24	418.07	398.85



Shop Vise

- An excellent workbench vise with pipe jaws, polished anvil, and 4-hole base.
- **HARDENED STEEL JAWS:**
- Replaceable jaws are furnished with a serrated pattern
- **DOUBLE LOCK DOWNS:**
- 2 lockdowns for a sturdier base and less rotation
- **360° LOCKING SWIVEL BASE**
- 360° swivel ability for ideal positioning on workbench



ITEM NO.	MODEL	JAW WIDTH	THROAT DEPTH	MAX OPENING	PIPE JAW CAPACITY	1	2	4	6
288036	WS4	4"	2-3/4"	4"	5/8" - 2"	\$189.04	\$179.22	\$170.37	\$162.35
288037	WS5	5"	3"	5"	1/4" - 2-1/4"	225.68	214.10	203.66	194.19
288038	WS6	6"	3-1/2"	6"	1/4" - 3"	327.03	310.26	295.12	281.40
288039	WS8	8"	4"	8"	3/4" - 3"	485.33	460.76	438.55	418.39



Utility Vise

- A general purpose vise ideal for utility and service.
- Replaceable steel jaws with serrated pattern to insure strength and long life. Large anvil is designed to take a pounding while forming and shaping materials. 180° locking swivel base, 4 mounting holes.



ITEM NO.	MODEL	JAW WIDTH	THROAT DEPTH	MAX OPENING	PIPE JAW CAPACITY	1	2	4	6
288045	674	4-1/2"	2-5/8"	4"	1/8" - 2"	\$167.12	\$158.44	\$150.62	\$143.53
288046	675	5-1/2"	3-1/4"	5"	1/8" - 2-1/2"	202.70	192.31	182.93	174.42
288047	676	6-1/2"	3-13/16"	5-1/2"	1/8" - 2-1/2"	275.68	261.54	248.78	237.21
288048	656HD	6-1/4"	4-3/8"	6"	1/8" - 3"	368.92	350.00	332.93	317.44
288049	648HD	8"	4-1/2"	7-1/2"	1/8" - 3"	510.67	484.81	461.45	440.23



ATV® All-Terrain Vise

- For jobs that demand function, strength, and mobility, the innovative design of the WILTON® ATV® vise will fill the need. Mounts instantly in the hitch receiver on the back of a truck (hitch pin included), or mount the included mounting bracket on your workbench or trailer. Water resistant sealed design protects internal components from water and debris. Patented 360° locking handle allows you to secure the handle while driving. "Drive Tight" set screws are designed to provide a tight fit in the hitch and reduce vibration while driving. Replaceable jaws feature a unique v-groove for vertical clamping of round objects. Integrated carrying handle for balanced carrying. Large striking anvil. Pipe jaws. Ideal for construction, automotive, and farm and ranch. Weight: 33.4 lb. Clamping force: 1 ton. #288008 includes a quality carrying case.



HITCH2BENCH
TECHNOLOGY



ITEM NO.	MODEL	JAW WIDTH	THROAT DEPTH	MAX OPENING	PIPE JAW CAPACITY	1	2	3	4
288007	ATV	6"	5"	5-3/4"	3/4" - 3"	\$320.27	\$303.85	\$289.02	\$275.58
288008	ATV w/case	6"	5"	5-3/4"	3/4" - 3"	400.00	379.49	360.98	344.19
288009	ATV	5"	4-1/4"	6"	7/8" - 3"	239.19	226.92	215.85	205.81

2 Axis Drill Press Vise

- Cross slide drill press vise for accurate in-line drilling.
- Accurately moves your workpiece horizontal and longitudinal for precise positioning
- Cast side knobs accurately dial in .1mm increments
- Hardened V Grooved Jaws hold round shaped objects both vertically and horizontally
- Durable construction with fine grain cast iron castings
- Black oxide coated screw provides consistent clamping pressure
- Durable base has 5 bolt lugs for easy mounting on a machine table



ITEM NO.	MODEL	JAW WIDTH	JAW OPENING	JAW DEPTH	X- & Y-TRAVEL	1	2	3	4
288101	CS3	3"	3"	1-1/8"	4-9/10"	\$149.32	\$141.56	\$134.57	\$128.24
288102	CS4	4"	4"	1-3/8"	4-9/10"	176.71	176.71	159.26	151.76
288103	CS5	5"	5"	1-1/2"	5-9/10"	285.14	270.51	257.32	245.35
288104	CS6	6"	6"	2"	7-9/10"	375.68	356.41	339.02	323.26
288105	CS8	8"	8"	2"	7-9/10"	648.00	615.19	585.54	558.62



Machinist Vise



- Wilton's Original Vise. Features the Wilton Bullet sealed design; fully enclosed to protect all internal components and lifetime lubricated for trouble free service. Virtually indestructible 60,000 PSI ductile iron body, two times the strength of grey-casted vises. Precision slide bar keyed for a .003" fit, eliminating movement in the front jaw regardless of opened distance. Up to 12" jaw opening for jobs demanding maximum holding capacity. Large anvil is designed to take a pounding while forming and shaping materials. Ideal for machine shops, automotive maintenance, maintenance and repair, and metal fabrication.



ITEM NO.	MODEL	JAW WIDTH	THROAT DEPTH	MAX OPENING	BASE	1	2	3	4
288066	300N	3"	2-5/8"	4-3/4"	Stationary	\$594.93	\$564.81	\$537.59	\$512.87
288067	400N	4"	3-1/2"	6-1/2"	Stationary	721.44	687.08	655.85	627.34
288068	500N	5"	4-1/4"	8"	Stationary	1,453.66	1,402.35	1,354.55	1,309.89
288069	600N	6"	5-1/2"	10"	Stationary	1,401.77	1,352.29	1,306.19	1,263.13
288070	800N	8"	5-13/16"	12"	Stationary	3,684.82	3,554.76	3,433.58	3,433.58
288061	300S	3"	2-5/8"	4-3/4"	Swivel	788.75	751.19	717.05	685.87
288062	400S	4"	3-1/2"	6-1/2"	Swivel	948.75	903.57	862.50	825.00
288063	500S	5"	4-1/4"	8"	Swivel	1,453.66	1,402.35	1,354.55	1,309.89
288064	600S	6"	5-1/2"	10"	Swivel	1,928.05	1,860.00	1,796.59	1,737.36
288065	800S	8"	5-13/16"	12"	Swivel	3,773.54	3,640.35	3,516.25	3,400.33



General Purpose Vise

- A general purpose vise ideal for the home shop or weekend projects.
- Diamond serrated jaw face for positive gripping. Features swivel base with double lock down screws, and built-in anvil. This truly is a WEEKEND WARRIOR.



ITEM NO.	MODEL	JAW WIDTH	THROAT DEPTH	MAX OPENING	WEIGHT (LBS)	1	3	6	9
288051	--	4"	2-1/4"	4"	16	\$97.22	\$92.11	\$87.50	\$83.33
288052	--	5"	2-1/2"	5"	27	156.16	148.05	140.74	134.12
288053	--	6"	3"	6"	39	212.16	201.28	191.46	182.56

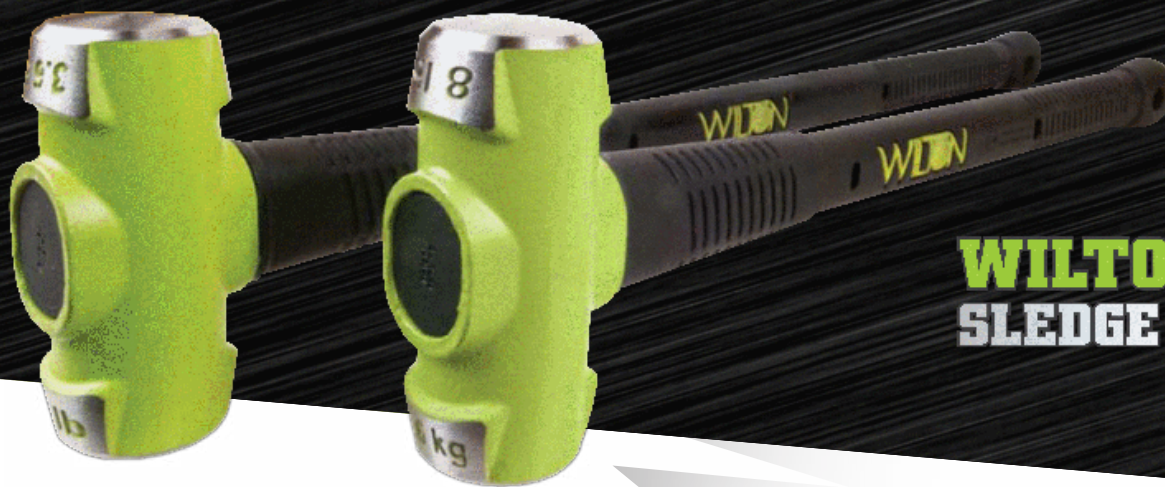


Super Juniors

- The WILTON MINI BULLET, a junior version of the popular bullet-design vises listed on previous pages [e.g. Tradesman, Machinist]. The jaws are replaceable and grooved for strong holding action. Features 45° swivel base and double lockdowns for quick and easy positioning in any working position.



ITEM NO.	MODEL	JAW WIDTH	THROAT DEPTH	MAX OPENING	BASE	1	2	4	6
288041	CBV-65	2-1/2"	1-3/4"	2-1/8"	Clamp-On	\$130.14	\$123.38	\$117.28	\$111.76
288043	SBV-65	2-1/2"	1-3/4"	2-1/8"	Swivel	112.33	106.49	101.23	96.47
288042	CBV-100	4"	2"	2-1/4"	Clamp-On	154.79	146.75	139.51	132.94
288044	SBV-100	4"	2"	2-1/4"	Swivel	124.66	118.18	112.35	107.06



WILTON B.A.S.H. SLEDGE HAMMERS

WILTON® B.A.S.H Hammers

The world's most durable hammers

UNBREAKABLE™ TECHNOLOGY

- Steel core design prevents breaking during overstrikes

NO-SLIP GRIP

- Textured handle for secure grip while striking

ANTI-VIBE NECK

- Ergonomically designed to prevent injury from repeated job site use

FLAT HEAD

- Conveniently designed to stand upright for easy reach



Sledge Hammers

- Hi-vis green head, drop forged 46 hrc head endures the most demanding applications and adds instant identification.
- Safety plate secures head to handle preventing head dislodging.



ITEM	HEAD SIZE	HANDLE LENGTH	1	4	8	12
202010	2-1/2 lbs	12"	\$58.33	\$55.26	\$52.50	\$50.00
202020	4 lbs	12"	65.28	61.84	58.75	55.95
202030	4 lbs	16"	76.39	72.37	68.75	65.48
202040	4 lbs	24"	96.67	91.58	87.00	82.86
202050	6 lbs	16"	95.83	90.79	86.25	82.14
202060	6 lbs	24"	102.74	97.40	92.59	88.24
202070	6 lbs	30"	113.70	107.79	102.47	97.65
202080	6 lbs	36"	119.18	112.99	107.41	107.41
202090	8 lbs	16"	109.59	103.90	98.77	94.12
202100	8 lbs	24"	117.81	111.69	106.17	101.18
202110	8 lbs	30"	126.03	119.48	113.58	108.24
202120	8 lbs	36"	136.99	129.87	123.46	117.65
			1	3	6	9
202130	10 lbs	16"	132.88	125.97	119.75	114.12
202140	10 lbs	24"	143.84	136.36	129.63	123.53
202150	10 lbs	30"	146.58	138.96	132.10	125.88
202160	10 lbs	36"	153.42	145.45	138.27	131.76
202170	12 lbs	24"	158.90	150.65	143.21	136.47
202180	12 lbs	30"	165.75	157.14	149.38	142.35
202190	12 lbs	36"	178.08	168.83	160.49	152.94
			1	2	4	6
202200	14 lbs	24"	183.56	174.03	165.43	157.65
202210	14 lbs	30"	189.04	179.22	170.37	162.35
202220	14 lbs	36"	195.89	185.71	176.54	168.24
202230	20 lbs	24"	251.35	238.46	226.83	216.28
202240	20 lbs	30"	248.65	235.90	224.39	213.95
202250	20 lbs	36"	258.11	244.87	232.93	232.93



Break the handle
under normal
wear and tear
and receive \$1,000.*

*Within the first 2 years.

TESTED FOR
25,000
OVERSTRIKES

Soft Face Sledge Hammers

- Same features as the regular BASH sledge hammers, with a 30HRC head specifically designed to mushroom when striking hard base materials.
- Key applications: mining, railroads, cutting tools, and maintenance on hard metal surfaces.



ITEM NO.	HEAD SIZE	HANDLE LENGTH	1	4	8	12
202310	2-1/2 lbs	12"	\$58.33	\$55.26	\$52.50	\$50.00
202320	4 lbs	12"	65.28	61.84	58.75	55.95
202330	4 lbs	16"	76.39	72.37	68.75	65.48
202340	6 lbs	24"	102.74	97.40	92.59	88.24
202350	6 lbs	36"	119.18	112.99	107.41	102.35
202360	8 lbs	24"	121.92	115.58	109.88	104.71
202370	8 lbs	36"	136.99	129.87	123.46	117.65
			1	3	6	9
202380	10 lbs	36"	154.79	146.75	139.51	132.94
202390	12 lbs	36"	172.60	163.64	155.56	148.24
202400	14 lbs	36"	187.67	177.92	169.14	161.18

Ball- and Cross-Pein Hammers

- Same features as the regular BASH sledge hammers.
- Key applications: Ball Pein: light forging, bending, forming, and round peining. Cross Pein: forging, bending, shaping, and cross peining.



ITEM NO.	HEAD SIZE	HANDLE LENGTH	1	3	6	12
BALL PEIN						
302016	24 oz	14"	\$54.17	\$51.32	\$48.75	\$46.43
302017	32 oz	14"	61.11	57.89	55.00	52.38
302018	48 oz	14"	70.00	66.22	62.82	59.76
CROSS PEIN						
302011	32 oz	16"	61.11	57.89	55.00	52.38
302012	48 oz	16"	73.61	69.74	66.25	63.10

Brass Sledge Hammers

- Same features as the regular BASH sledge hammers, with a non-sparking brass head for use near combustible materials and non-marring to reduce work damage.
- Key applications: near combustible materials, and where surface protection is required.



ITEM NO.	HEAD SIZE	HANDLE LENGTH	1	3	6	12
202510	2-1/2 lbs	12"	\$120.55	\$114.29	\$108.64	103.53
202520	4 lbs	12"	158.90	150.65	143.21	136.47
202530	4 lbs	16"	168.49	168.49	151.85	144.71
202540	6 lbs	16"	228.38	216.67	206.10	196.51
202550	8 lbs	16"	301.35	285.90	271.95	259.30
202560	8 lbs	30"	329.73	312.82	297.56	283.72

Dead Blow Hammers

- Same features as the regular BASH sledge hammers.
- Dead blow eliminates bounce-back.
- Spark-resistant – safe for use near combustible materials; no exposed metal on face, head, or shaft.
- Soft face helps prevent marring.
- Key applications: automotive, metal fabrication, oil and mining, wood and metal assembly, aerospace.



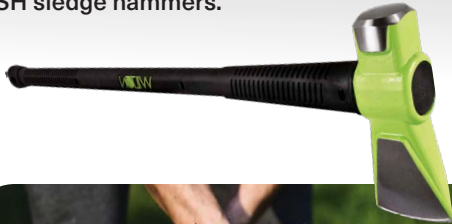
ITEM NO.	HEAD SIZE	HANDLE LENGTH	1	3	6	12
202570	1-1/2 lbs	14"	\$55.56	\$52.63	\$50.00	\$47.62
202573	2 lbs	14"	59.72	56.58	53.75	51.19
202576	3 lbs	14"	66.67	63.16	60.00	57.14
202579	4 lbs	16"	88.89	84.21	80.00	76.19
202582	8 lbs	30"	126.03	119.48	113.58	108.24



WILTON B.A.S.H. SLEDGE HAMMERS

Splitting Mauls

- Same features as the regular BASH sledge hammers.



ITEM NO.	HEAD SIZE	HANDLE LENGTH	1	3	6	9
202600	6 lbs	36"	136.99	129.87	123.46	117.65
202603	8 lbs	36"	158.90	150.65	143.21	136.47

Ductile Iron Pipe Wrench

- A heavy-duty pipe wrench that's built to last.
- Drop-forged upper and lower jaws with a floating hook jaw with spring suspension for easier gripping.



ITEM NO.	LENGTH	CAPACITY	1	3	6	12
223750	10"	1-1/2"	\$17.18	\$16.28	\$15.46	\$14.73

HAMMER KITS



Mechanics kit (#202260) includes:

- #202020: 4 Lb Head, 12" Handle B.A.S.H.® Sledge Hammer
- #302017: 32 Oz Head, 14" Handle B.A.S.H.® Ball Pein Hammer
- #302011: 32 Oz Head, 16" Handle B.A.S.H.® Cross Pein Hammer



Shop kit (#202270) includes:

- #202020: 4 Lb Head, 12" Handle B.A.S.H.® Sledge Hammer
- #302017: 32 Oz Head, 14" Handle B.A.S.H.® Ball Pein Hammer
- #202579: 4 Lb Head, 16" Handle B.A.S.H.® Dead Blow Hammer



Dead blow kit (#202585) includes:

- #202573: 2 Lb Head, 14" Handle B.A.S.H.® Dead Blow Hammer
- #202576: 3 Lb Head, 14" Handle B.A.S.H.® Dead Blow Hammer
- #202579: 4 Lb Head, 16" Handle B.A.S.H.® Dead Blow Hammer



ITEM NO.	DESCRIPTION	1 kit	2	4	6
202260	3-Pc Mechanics kit	\$142.47	\$135.06	\$128.40	\$122.35
202270	3 Pc Shop kit	168.49	159.74	151.85	144.71
202585	3 Pc Dead blow kit	168.49	159.74	151.85	144.71

HRC-40 Bolt Cutters

- JET Bolt Cutters incorporate high-carbon alloy tool steel jaws for cutting concrete-reinforcing rods, medium tensile and soft bolts, rods, rivets, bars, and chains.
- HRC-40 -- cuts materials up to a 40 Rockwell Hardness for industrial applications.
- Rubber gripped all steel handles are angled for maximum leverage, reducing operator fatigue.



ITEM NO.	HANDLE LENGTH	CAPACITY	1	3	6	12
223700	12"	3/16"	\$25.67	\$24.32	\$23.10	\$22.00
223703	14"	1/4"	34.72	32.89	31.25	29.76
223706	18"	5/16"	40.28	38.16	36.25	34.52
223709	24"	3/8"	48.96	46.38	44.06	41.96
223712	30"	1/2"	64.93	61.51	58.44	55.65
223715	36"	5/8"	83.33	78.95	75.00	71.43
223718	42"	3/4"	120.97	120.97	108.88	103.69

HRC-48 Bolt Cutters

- Similar to the above but cuts up to 48 Rockwell hardness. Red jaws and heads.

ITEM NO.	HANDLE LENGTH	CAPACITY	1	3	6	12
223724	14"	1/4"	\$25.60	\$24.25	\$23.04	\$21.94

JCP Series Cable Pullers

- JET JCP Series cable pullers incorporate proven industrial designs that lift, lower, stretch or pull heavy loads.
- Concealed spring lever control to prevent accidental release.
- Aircraft quality 3/16" cable (1/4" on JCP-4).
- Maximum lift on JCP-1 is 12 ft. JCP-2 and JCP-4 have a snatch block included and maximum lift is 5 ft.



ITEM NO.	DESCRIPTION	1	3	6	12
230100	JCP-1: 1-ton, 18:1 ratio	\$42.79	\$40.42	\$38.29	\$36.38
230103	JCP-2: 2-ton, 36:1 ratio	55.56	52.63	50.00	47.62
230106	JCP-4: 4-ton, 36:1 ratio	86.11	81.58	77.50	73.81



AV's® Offset Forged Snips

- Forged steel upper and lower jaws with torsion handle spring and latch.
- Power-Fit™ performance hand grips.
- 18-gauge capacity (in galvanized or mild steel).
- Limited lifetime warranty.



ITEM NO.	DESCRIPTION	1	6	12	24
223221	Offset, Left-hand (red)	\$20.97	\$19.91	\$18.95	\$18.08
223228	Offset, Right-hand (green)	20.97	19.91	18.95	18.08

AV's® Aviation Snips

- Traditional design with forged steel jaws, torsion handle spring and side latch.

ITEM NO.	DESCRIPTION	1	6	12	24
223200	Left-hand	\$16.29	\$15.47	\$14.72	\$14.05
223207	Right-hand	16.29	15.47	14.72	14.05
223214	Combination	14.64	13.90	13.23	12.62



Palmgren's high-tech line of C-clamps gives you performance and features that count. Built from state-of-the-art research, computer aided design, and new all-steel spring tempered frame geometry—coupled with an advanced heat treating process creates C-clamps that provide a secure and accurate hold. Palmgren's all steel clamps are cost effective, versatile, durable and long lasting.

- **High strength**
- **Lower weight**
- **Lifetime guarantee against breakage**
- **Innovative spring tempered steel frames**
- **Black-oxide plated spindles resist wear and tear while impeding rust**
- **Hardened steel spindles provide greater loading capabilities and longer service life**
- **Bodies have a nickel and chrome plated finish**
- **Replaceable swivel pads**

Standard Duty L-Clamps

- One clamp accommodates a wide variety of sizes and shapes of workpieces.
- Innovative spring tempered and hardened steel frames optimizes high static stress loadings.
- Drop forged sliding clamping arm for added strength and durability.



ITEM NO.	NOMINAL OPENING CAPACITY	THROAT DEPTH	SPINDLE DIAMETER	CLAMPING PRESSURE (LBS)	WEIGHT (LBS)	1	3	6	12
140940	0 - 4"	2-3/8"	1/2"	600		\$22.06	\$20.83	\$19.74	\$18.75
140943	0 - 6"	3-5/32"	9/16"	700		27.94	26.39	25.00	23.75
140946	0 - 8"	3-15/16"	5/8"	1000		37.50	35.42	33.55	31.88
140949	0 - 10"	3-15/16"	5/8"	1200		44.12	41.67	39.47	37.50
140952	0 - 12"	3-15/16"	3/4"	1200		58.82	55.56	52.63	50.00
140955	0 - 16"	3-15/16"	3/4"	1650		58.82	55.56	52.63	50.00

COLUMBIAN



400 Series™ Hargrave C-Clamps

- V-grooved anvil allowing for secure holding of all materials including rounds, squares, & flats.
- Ideal for: steel fabrication, production, industrial maintenance, & repair operations.
- By WILTON®.

ITEM NO.	NOMINAL OPENING CAPACITY	THROAT DEPTH	SPINDLE DIAMETER	CLAMPING PRESSURE (LBS)	WEIGHT (LBS)	1	3	6	9
140120	0 - 12"	5-3/4"	7/8"	9500		\$113.39	\$107.35	\$101.91	\$97.00



AUTOMATIC LOCKING PLIERS AND CLAMPS

- **Grab thick or grab thin without adjusting** – patented locking mechanism automatically adjusts the jaws to any size object without having to adjust a knob.
- **Set and Forget™ pressure control** – turn clockwise to increase pressure and counterclockwise to decrease pressure.
- **Lifetime warranty.**
- * **Armor Tool clamps are available only while supplies last!**

Automatic Adjusting Long-Reach C-Clamp



ITEM NO.	OAL	TYPE	1	6	12	24	36
031241	10"	Regular tip	\$22.49	\$21.30	\$20.24	\$19.27	\$18.61
031261	19"	Regular tip	36.43	34.51	32.79	31.23	30.15
031271	19"	Swivel pad	37.29	35.33	33.56	31.96	30.86

AUTOMATIC™

AUTO-ADJUST PLIERS

- * **7x Faster...**
- * **100% Easier!**

Automatic Adjusting Locking Pliers



ITEM NO.	OAL	TYPE	1	4	8	16	32
031011	6"	Curved jaw	\$16.65	\$15.78	\$14.99	\$14.27	\$13.78
031021	10"	Curved jaw	22.49	21.30	20.24	19.27	18.61
031101	7"	Needle-nose	17.99	17.04	16.19	15.42	14.89

Automatic Adjusting C-Clamp



ITEM NO.	OAL	TYPE	1	6	12	24	36
031201	7"	Swivel pad	\$20.82	\$19.72	\$18.74	\$17.85	\$17.23
031211	7"	Regular tip	18.24	17.28	16.41	15.63	15.09

The IRWIN® VISE-GRIP® brand is legendary. Professional tradesmen have trusted the strength and durability of VISE-GRIP pliers since 1924. With proven performance in every turn, these are the tools that tradesmen choose first – and pass on to the next generation.

The Original™ Curved Jaw Locking Pliers with Wire Cutter

- The Original – Since 1924.
- Curved jaw with built-in wire cutter is great for a variety of applications and material shapes.



ITEM NO.	DESCRIPTION	1	10	20	50	100
222000	4WR, 4" curved jaw	\$11.66	\$11.01	\$10.43	\$9.91	\$9.91
222003	5WR, 5" curved jaw	16.31	15.40	14.59	13.86	13.20
222006	7WR, 7" curved jaw	16.75	15.82	14.99	14.24	13.56
222009	10WR, 10" curved jaw	15.31	14.46	13.70	13.01	12.39

Fast Release™ Curved Jaw Locking Pliers with Wire Cutter – 2 pc set

- This set includes 7" and 10" Fast Release™ locking pliers with one-handed triggerless release—twice as easy to open as the traditional design.
- ProTouch™ grips have molded handles for comfort, control, and less hand fatigue.



ITEM NO.	DESCRIPTION	1 set	5	10	20	50
222030	10WR & 7WR set	\$35.29	\$33.33	\$31.58	\$30.00	\$28.57



The Original™ Locking Pliers Sets



#222020 Includes
5" and 10" curved jaw locking plier with wire cutter



#222023 Includes
• 7" curved jaw and
• 6" needle-nose, with wire cutter



#222026 Includes
6" needle-nose,
• 7" straight jaw, and 10" curved jaw

ITEM NO.	DESCRIPTION	1 set	5	10	20	50
222020	10WR & 5WR	\$31.66	\$29.90	\$28.33	\$26.91	\$25.63
222023	7WR & 6LN	32.57	30.76	29.14	27.69	26.37
222026	10WR, 7R, & 6LN	48.72	46.01	43.59	41.41	39.44

The Original™ Straight Jaw Locking Pliers

- The Original – Since 1924.
- Straight jaw locking pliers provides maximum contact on flat, square, or hex materials.



ITEM NO.	DESCRIPTION	1	5	10	20	50	100
222012	7R, 7" straight jaw	\$16.75	-	\$15.82	\$14.99	\$14.24	\$13.56
222015	10R, 10" straight jaw	17.03	16.08	15.24	14.48	13.79	13.16

Locking C-Clamps with Regular Tips

- Wide-opening jaw provides greater versatility for clamping a variety of shapes. Jaw capacity as follows:

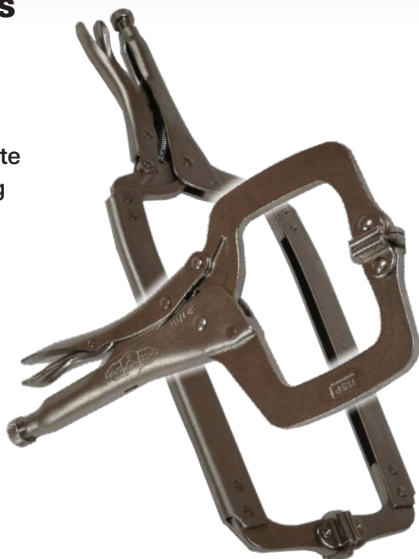
- 6" 2-1/8"
- 9" 4-1/2"
- 11" 4"
- 18" 8"
- 24" 10"



ITEM NO.	DESCRIPTION	1	5	10	20	50
222040	6R, 6" C-Clamp	\$14.01	\$13.24	\$12.54	\$11.91	\$11.35
222043	9DR, 9" C-Clamp	20.97	19.81	19.81	17.83	16.98
222046	11R, 11" C-Clamp	22.38	21.14	20.03	19.03	18.12
222049	18R, 18" C-Clamp	38.66	36.51	34.59	32.86	31.30
222052	24R, 24" C-Clamp	47.63	44.99	42.62	40.49	38.56

Locking C-Clamps with Swivel Pads

- Swivel pads hold tapered work, cumbersome fabricating jobs and delicate projects without damaging the work surface.
- Also available: pack of 4 soft pads.



- Soft pads fit 11SP, 18SP and 24SP

ITEM NO.	DESCRIPTION	1	5	10	20	50
222055	4SP, 4" with swivels	N/A	\$9.00	\$8.59	\$8.21	\$7.95
222058	6SP, 6" with swivels		11.65	11.04	10.49	9.99
222061	9SP, 9" with swivels	22.07	20.85	19.75	18.76	17.87
222064	11SP, 11" with swivels	24.06	22.72	21.53	20.45	19.48
222067	18SP, 18" with swivels	39.74	37.53	35.55	33.78	32.17
222070	24SP, 24" with swivels	49.63	46.88	44.41	42.19	40.18
		1 pack	5	10	20	50
222073	Pack of 4 soft pads	7.54	7.54	7.13	6.75	6.41

GrooveLock Pliers

- Set of 8" and 10" GrooveLock Pliers featuring press-n-slide button that adjusts jaws 2x faster than traditional groove joint pliers.
- The multi-groove ratcheting system has twice the groove positions than other groove joint pliers, for precise positioning on any type of work surface.



#222120

Includes 8" and 10" V-Jaw pliers.



#222123

Includes 8" V-Jaw and 10" Straight Jaw.

ITEM NO.	DESCRIPTION	1 set	5	10	20	50
222120	GV8 & GV10	\$29.63	\$27.99	\$26.51	\$25.19	\$23.99
222123	GV8 & GV10R	37.01	34.96	33.12	33.12	29.96

The Original™ Locking Chain Clamp

- Chain holds and locks around any shape or size.
- Ideal for awkward shape pieces.
- Turn screw to adjust pressure and fit work. Stays adjusted for repetitive use.
- Classic trigger release designed to provide maximum locking force.
- Jaw capacity:
18" / 455mm.
Size: 9" / 255mm



- **NOTE: 18" Extension Chain is used only for lengthening the chain already on the tool. It is NOT a replacement chain. Add as many lengths as desired.**

ITEM NO.	DESCRIPTION	1	5	10	20	50
222100	9" chain clamp	\$29.96	\$28.31	\$26.82	\$25.48	\$24.26
222103	18" EXTENSION Chain	15.13	14.29	13.54	12.86	-
222106	18" REPLACEMENT Chain	15.13	14.29	13.54	12.86	-

Compound Long-Reach Pliers

- Superior long reach design for working in confined spaces.
- Compound joint design allows jaws to open wider than the handle.
- Machined jaws for maximum gripping strength.
- Chrome Vanadium steel construction for durability and extended tool life.
- Dipped grips for comfort and improved precision.
- OAL: 13-1/4", jaw opening 2-3/4".
- Available with bent nose or straight nose.



ITEM NO.	DESCRIPTION	1	5	10	20	50
222140	Bent nose	\$26.88	\$25.39	\$24.05	\$22.85	\$21.76
222143	Straight nose	26.88	25.39	25.39	22.85	21.76

Cee Tee Co.® Combination Pliers

- Curved jaws combination with machined gripping teeth and wire cutter.
- Forged from carbon steel and accurately machined, hardened, and tempered.
- Features knurled handles.
- Carbon steel.



ITEM NO.	DESCRIPTION	1	6	12	24	48
181261	6" (OAL 6-1/2")	\$8.25	\$7.80	\$7.39	\$7.02	\$6.68
181281	8" (OAL 8")	9.17	8.66	8.21	7.80	7.43

Tongue & Groove Pliers



- 10" pliers with hex jaw.
- Special jaw shape to accommodate many shapes.
- Ergonomically designed offset head for greater leverage.
- PermaLock® fastener eliminates nut and bolt failure.



ITEM NO.	DESCRIPTION	1	5	10	20	50
224320	10" CHANNELLOCK	\$25.17	\$23.78	\$22.52	\$21.40	\$20.38

Crimpers



- Designed for crimping of both insulated and non-insulated solder-less connections and terminals.
- Slim nose shape for tight places.
- Perfectly mated cutters, scientifically heat treated to hold their edge.
- OAL 9.75", jaw width 1.25", nose thickness 0.219".



ITEM NO.	DESCRIPTION	1	5	10	20
224340	Crimpers	\$38.73	\$36.58	\$34.65	\$32.92

Adjustable Wrenches



- Hardened and tempered with precision machined jaws and knurled adjusting worm.
- I-beam handle, chrome plated, drop-forged alloy steel.
- Meets or exceeds federal and ANSI specifications.



ITEM NO.	OAL	OPENING	1	6	12	24	48
224000	6 inch	15/16 in.	\$9.63	\$9.09	\$8.61	\$8.18	\$7.79
224003	8 inch	1-1/8 in.	12.49	11.80	11.18	10.62	10.11
224006	10 inch	1-5/16 in.	14.94	14.11	13.36	12.70	12.09
224009	12 inch	1-1/2 in.	21.15	19.97	18.92	17.98	17.12
			1	3	6	12	24
224012	15 inch	1-3/4 in.	35.71	33.72	31.95	30.35	28.91
224015	18 inch	2-1/16 in.	57.21	54.03	51.19	48.63	46.31
224018	24 inch	2-7/16 in.	99.42	93.90	88.95	84.51	80.48

Bondhus® Balldriver® L-Wrench Key Sets

- Made with Protanium® High Torque steel.
- Dry, corrosion resistant ProGuard™ finish, providing 5X more rust and corrosion resistance than plated finishes, and offers better tool grip.
- #610931 includes 0.05, 1/16, 5/64, 3/32, 7/64, 1/8, 9/64, 5/32, 3/16, 7/32, 1/4, 5/16, & 3/8".
- #610933 same as above plus 7/16 & 1/2", in vinyl roll up pouch.
- #610939 includes 1.5, 2, 2.5, 3, 4, 5, 6, 8, & 10mm.
- #610941 includes 1.27, 1.5, 2, 2.5, 3, 3.5, 4, 4.5, 5, 5.5, 6, 7, 8, 9, & 10mm.
- Includes plastic holder.
- Lifetime warranty.



Bondhus Ball End tips are designed to be the perfect balance between angle and strength. Ball End strength is maximized, while still providing a consistent full 25° working angle.

ITEM NO.	DESCRIPTION	1	5	10	20
610931	13 fractional sizes .050 - 3/8"	\$16.19	\$15.29	\$14.48	\$13.76
610933	15 fractional sizes .050 - 1/2"	39.68	37.48	35.50	33.73
610939	9 metric sizes 1.50 - 10mm	13.15	12.42	11.76	11.18
610941	15 metric sizes 1.27 - 10mm	22.09	20.87	19.77	18.78
610971	Combo #610931 & 610939	27.62	26.08	24.71	23.47

Bondhus® 7 Piece Hollow Shaft Nut Driver Set

- Hexagonal upper shaft for use with a wrench for increased torque
- Ergonomic handle design
- Non-slip grip
- Anti-roll handle
- High strength chrome plated shaft
- Sizes 3/16, 1/4, 5/16, 11/32, 3/8, 7/16, 1/2"
- Lifetime warranty.



ITEM NO.	DESCRIPTION	1	5	10	20
223520	7-piece nut driver set	\$24.91	\$23.53	\$22.29	\$21.18

Telescoping MegaMag Pick-Up Tool

- Goblet shaped head pushes flux to top of magnet.
- Sides will not attach to unwanted metal surfaces.
- Comfortable, textured and cushioned grip.
- Telescopes from 8-1/4" to 30-1/4".
- Picks up a whopping 16 lbs!



• Shown partially extended

ITEM NO.	DESCRIPTION	1	5	10	20
220210	16 lb Pick-up Tool	\$23.81	\$22.49	\$22.49	\$20.24



23-Piece SAE Socket & Drive Tool Set

- 1/2" drive.

Set includes:

- 7/16" - 1-1/8" x 1/16ths + 1-1/4" shallow sockets
- 1/2" - 7/8" x 1/16ths deep sockets
- (1) 1/2" drive ratchet
- (1) 1/2" drive x 15" flex handle
- (1) 1/2" drive x 6" extension.
- Supplied in a sturdy plastic case.



ITEM NO.	DESCRIPTION	1 set	3	6	12
223120	23-pc socket set	\$112.11	\$106.43	\$101.30	\$97.77

12-Piece Metric Socket & Drive Tool Set

- 1/2" drive.

Set includes:

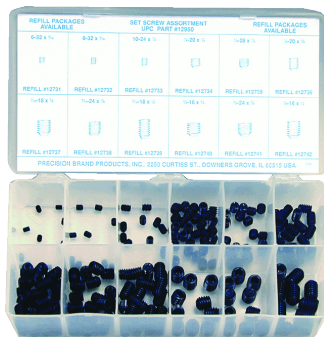
- 12mm - 19mm x 1mm + 22mm & 24mm shallow sockets
- (1) 1/2" drive ratchet
- (1) 1/2" drive x 6" extension.
- Supplied in a sturdy plastic case.



ITEM NO.	DESCRIPTION	1 set	3	6	12
223110	12-pc socket set	\$44.57	\$42.32	\$40.28	\$38.87

200-Piece Set Screw Assortment

- Sizes: 6-32 x 3/16", 8-32 x 3/16", 10-24 x 1/4", 1/4-20 x 1/4", 1/4-28 x 1/4", 1/4-20 x 3/8", 5/16-18 x 3/8", 5/16-24 x 3/8", 5/16-18 x 1/2", 3/8-16 x 3/8", 3/8-24 x 3/8" & 3/8-16 x 1/2"



ITEM NO.	DESCRIPTION	1	3	6	12
013201	200-pc. set screws	\$48.15	\$45.71	\$43.51	\$41.99

WILLIAMSTM

IRWIN

Impact Socket Adapters

- Engineered specifically for use in impact tools.
- Manufactured with heavy-duty, cold-forged high-grade steel to withstand high torque output.
- Ball retention design for quick-change applications.
- Forged socket body.
- Overall length: 2".
- Shank: 1/4" quick release.



ITEM NO.	DESCRIPTION	1	5	10	20	50
220693	3/8" - carded	3.62	3.42	3.24	3.08	2.93
220696	1/2" - carded	4.57	4.32	4.09	3.89	3.70

Impact-Ready Magnetic Nutsetters

- Lobular design drives fastener on side instead of corner for less stripping and longer life.
- Rare earth magnets hold fasteners securely with four times the hold of standard magnets.
- Overall length: 1-7/8".
- Shank: 1/4" quick release.



ITEM NO.	DESCRIPTION	1	3	9	18	50
220674	1/4" - carded	\$3.76	\$3.76	\$3.56	\$3.37	
220653	5/16" - carded	4.03	4.03	3.81	3.61	
220659	3/8" - carded	4.31	4.31	4.07	3.86	
		1	3	9	18	48
220677	7/16" - carded	4.43	4.43	4.18	3.96	
220671	1/2" - carded	4.69	4.69	4.43	4.20	
	BULK 10-PACK, UOM: EA	10	30	50	100	200
220662	Size: 3/8"	3.59	3.39	3.21	3.05	2.90

Malco Hand Riveter

- Lightweight, compact size and slim nose projection allows this riveter to go wherever the work is.
- Four nosepieces: 3/32, 1/8, 5/32, and 3/16 in. store in handle.
- Rugged steel construction, spring return handles, and comfortable contour grips make operation fast and easy.
- Not for use with 5/32" or 3/16" steel rivets (steel rivets larger than 3.2 mm).



ITEM NO.	DESCRIPTION	1	3	6	12
220008	CR18 economy riveter	\$33.37	\$31.68	\$30.16	\$28.77

Malco 2IN1 Hand Riveter

- One hand operation made easy!
- Includes 3 nose pieces: 1/8, 5/32, & 3/16", store in handle.
- Professional slim nose allows 2-in-1 to go where other hand riveters cannot.
- Heavy-duty all steel construction insures long life.
- Red vinyl cushion grip and hand stop.



ITEM NO.	DESCRIPTION	1	2	4	8
220010	2-in-1 hand riveter	\$92.01	\$87.35	\$83.14	\$79.32

Slic-tite® PTFE Thread Tape

- Pressure: to 2,000 PSI
- Sealing temperature: -450°F to 550°F.
- 4 mils thick and made with PTFE for greater sealing power.
- Non-toxic
- Yellow is for gas line usage.
- Pink is for water line usage.

LA-LO



ITEM NO.	DESCRIPTION	1	12	48	96
228400	White 1/2" x 300'		\$2.67	\$2.53	\$2.40
228407	White 1/2" x 600'	3.65	3.44	3.26	3.10
228414	Yellow 1/2" x 260'		2.42	2.29	2.18
228421	Pink 1/2" x 260'	2.42	2.42	2.29	2.18

Clamp Fixtures

- Mounts on any length of 3/4" black pipe with threaded ends.
- 223653 with 1-3/4 in. wide jaws has a crank handle.
- 223659 with 2-1/2 in. wide jaws has a wing-nut style handle.
- Both come with a coil spring "stop" to thread onto the opposite end of the pipe.

ANCHOR
BRAND



ITEM NO.	DESCRIPTION	1 set	5	10	20
223653	Jaw width: 1-3/4"	\$31.38	\$29.64	\$28.08	\$26.68
223659	Jaw width: 2-1/2"	37.26	35.19	33.34	31.67

Dual-Range Non-Contact Voltage Tester

KLEIN TOOLS

- Automatically detects and indicates low voltage (12-48 Volts AC) and standard voltage (48-1000 Volts AC), allowing broad application.
- Non-contact detection of standard voltage in cables, cords, circuit breakers, lighting fixtures, switches, outlets, and wires.
- Non-contact detection of low-voltage in security, entertainment, communications, environmental control, and irrigation systems.
- High intensity, bright green or blue LED indicates the tester is operational and aids in illuminating the workspace.
- Digitally controlled ON/OFF power button.
- Auto power-off feature conserves and extends battery life.
- Microprocessor controlled low battery indicator.
- CAT IV 1000 Volt rating provides expanded operation and protection.
- Lightweight, durable polycarbonate plastic resin construction with a convenient pocket-clip.
- Package contains insert card with integrated owner's manual and
- 2 AAA 1.5 volt batteries.
- Frequency range 50-500 Hz



ITEM NO.	DESCRIPTION	1	4	8	16
225500	Voltage tester	\$35.44	\$33.48	\$31.71	\$30.13



American Standard Wire Gauge

- Heavy gauge, hardened stainless steel wire gauge measures gauge sizes 0 - 36 and has decimal equivalents on the reverse side.
- Useful to gauge wire, sheet, plate, and non-ferrous metals such as copper, aluminum, and brass.



ITEM NO.	DESCRIPTION	1	3	6	12
224621	Wire gauge	\$30.81	\$29.10	\$27.57	\$26.19

Stainless Steel Protractor

- For setting bevels, measuring and transferring angles.
- Etched graduations from 0 - 180° in both directions.
- 6" protractor arm with knurled locking nut.



ITEM NO.	DESCRIPTION	1	6	12	24
224614	Protractor	\$16.37	\$15.46	\$14.65	\$13.92

6" Stainless Steel Digital Caliper

- Accurately reads to 0.001" with 0.0005" resolution.
- Displays decimal, fractional, or metric.
- Automatic off.
- Includes one extra battery.
- Battery life is 1 year continuous or 3 years under normal on/off conditions.



ITEM NO.	DESCRIPTION	1	2	4	8
224607	6" digital caliper	\$54.06	\$51.05	\$48.37	\$45.95

Scriber / Etching Pen

- Tungsten carbide point for marking and scribing stainless steel, ceramics and glass.
- Screw chuck for reversing point when not in use.
- Also includes a magnet in the opposite end as a pickup tool.
- Pocket clip.
- OAL: 5-7/16".



ITEM NO.	DESCRIPTION	1	6	12	24
224691	Etching pen / scriber	\$9.01	\$8.51	\$8.06	\$7.66

Screwdriver Magnetizer

- Convenient device magnetizes and de-magnetizes screwdrivers and small tools.
- To magnetize, insert blade in (+) opening and slide back and forth.
- To demagnetize, start at the lowest (-) step and repeat procedure.
- If tool is not completely demagnetized, repeat at a higher step.



ITEM NO.	DESCRIPTION	1	6	12	24
224635	Magnetizer / demagnetizer	\$4.94	\$4.67	\$4.42	\$4.20

Telescoping Magnetic Pick-Up Tool

- Pocket magnet with powerful neodymium magnet lifts up to 2 lbs, six times more than same-sized cobalt magnets.
- Retracted length 5-1/2", overall length when extended 24".



ITEM NO.	DESCRIPTION	1	6	12	24
224642	Magnetic pick-up	\$10.96	\$10.35	\$9.81	\$9.32

CG20 Professional Caulking Gun

- Square piston design.
- Minimizes worker fatigue.
- User can regulate stroke to fit hand.
- Handy puncture wire folds inside handle.
- Weight: 28 oz.
- 1/10 gallon cartridge capacity.



ITEM NO.	DESCRIPTION	1	5	10	20
223321	CG-20 caulking gun	\$40.21	\$38.18	\$36.34	\$34.67

CG18 Easy Dispensing Caulking Gun

- Rotating barrel for maneuverability and easy caulk placement.
- Double-gripping plate for greater durability.
- Trigger adjustment screw compensates for normal wear to assure full dispensing stroke and extend life.
- Weight: 28 oz.
- 1/10 gallon cartridge capacity.



ITEM NO.	DESCRIPTION	1	5	10	20
223314	CG-18 caulking gun	\$7.59	\$7.20	\$6.86	\$6.54

CG12 Flexible / Lightweight Caulking Gun

- Compact design stores in a toolbox.
- Handy puncture wire.
- Ladder size hang hook.
- Weight: 25 oz.
- 1/10 gallon cartridge capacity.



ITEM NO.	DESCRIPTION	1	5	10	20	50
223307	CG-12 caulking gun	\$7.59	\$7.20	\$6.86	\$6.54	\$6.25

CG10 Utility Caulking Gun

- Weight: 17 oz.
- 1/10 gallon cartridge capacity.



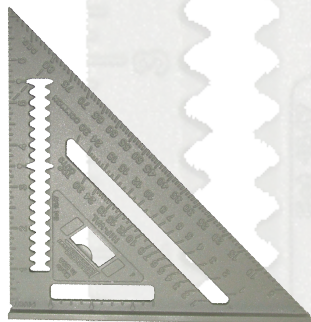
ITEM NO.	DESCRIPTION	1	5	10	20	50
223300	CG-10 caulking gun	\$6.06	\$5.72	\$5.42	\$5.15	\$4.90



JOHNNY SQUARE® Die-cast Aluminum Rafter Square



- Solid aluminum body with CNC machined edges for greater accuracy.
- Permanent graduations and numbers.
- Continuous scribing notches – ideal for ripping at 3-1/2" and 5-1/2".*
- *12" has scribe notches starting at 1-3/4".



ITEM NO.	DESCRIPTION	1	5	10	20	40
340360	7" Square	\$7.10	\$6.71	\$6.36	\$6.04	
340374	12" Square	17.10	16.15		15.30	14.54

Stringliner

Mason/Construction Line Reels & Refills

- Reel fits all 1" line cores from 4" - 6" long.
- Line secures in convenient notch.
- Reload rolls of line easily.
- Rewind hand crank [or automatic rewind using power screwdriver in slot in bottom of handle].
- Line is quality #18 Nylon Line [tensile strength 165 lbs].
- Bright solid or mixed colors in either Twisted or Braided.
- #27 Nylon Line available [tensile strength 216 lbs].
- Cotton line also available.



ITEM NO.	REEL LENGTH	REFILL LENGTH	COLOR	TYPE	1	12	24	48
225400	540'		Gold	Twisted	\$7.93	\$7.53	\$7.17	\$6.92
225424	500'		Fluo Orange	Braided	10.13	9.62	9.16	8.84
225426	500'		Fluo Yellow	Braided	10.13	9.62	9.16	8.84
235400		540'	Gold	Twisted	4.00	3.80	3.61	3.49
235424		500'	Fluo Orange	Braided	3.49	3.49	5.30	5.12
235426		500'	Fluo Yellow	Braided	5.87	5.57	5.30	5.12
235443		500'	Pink	Braided	6.46	6.10	5.78	5.49

Phone: (855) 4ZDRILL

Order Email: orderdesk@zdrill.net

Fax: (855) 390-3430

FatMax® Reinforced with Blade Armor™ Tape Rules

- 1-1/4" wide is easy to read and features Mylar® polyester film coating for superior durability.
- Exclusive cushion grip built into the case for a comfortable, slip-resistant grip, and impact resistance.
- Specially designed hook grabs on side, top, or bottom.
- Blade features an amazing 11 foot standout.
- Made in the USA



ITEM NO.	BLADE	GRADUATIONS	1	4	12	24	48
340161	1-1/4" x 16'	1/16 in	\$21.78	\$20.57	\$19.49	18.51	\$17.63
340171	1-1/4" x 25'	1/16, 1/32 in	20.88	19.72	18.68	17.75	16.90
340181	1-1/4" x 30'	1/16, 1/32 in	29.04	27.43	25.99	24.69	24.69
340191	1-1/4" x 35'	1/16, 1/32 in	34.84	32.90	31.17	29.61	28.20

Fractional Read Tape Measure

- Polymer coated blade for long life.
- Tough ABS case.
- Graduations at 1/16", stud markings at 16" and 19.2".



STANLEY

ITEM NO.	DESCRIPTION	1	6	12	24	48
340011	3/4" x 16'	\$6.15	\$5.81	\$5.50	\$5.23	\$4.98
340021	1" x 25'	9.01	8.51	8.07	7.66	7.30
340031	1" x 30'	11.85	11.19	10.61	10.08	9.60

Lufkin

Xtra-Wide Control Series 1-3/16" x 25' Tape Measure

- Features the unique Drag Strip™ finger access on bottom of case to allow you to control your blade more effectively.
- 10 foot standout.



ITEM NO.	DESCRIPTION	1	6	12	18	24
340400	LUFKIN® Xtra-Wide	\$21.49	\$20.29	\$19.22	\$19.22	\$17.39

P1000 Hi-Viz Tape Measure

- Case features rubber cushion for improved grip and impact protection.
- Up to 9 foot standout (1-inch).



ITEM NO.	DESCRIPTION	1	6	12	18	24
340428	1" x 25'	\$24.30	\$22.95	\$21.74		\$20.66
340414	3/4" x 16'	17.90	16.91	16.02	15.22	14.49
340421	3/4 x 16 English/Metric	17.90	16.91	16.02	16.02	14.49

Magnetic End Hook 1" x 25' Tape Measure

- Features a magnetic end hook allowing for easy one-man measuring of metal frames, etc.
- Powerful dual magnets can also serve as a pickup tool.



ITEM NO.	DESCRIPTION	1	6	12	18	24
340407	1" x 25'	\$21.87	\$20.65	\$19.57	\$18.59	\$17.70

POWERLOCK® Tape Measure

STANLEY

- Features Mylar® polyester film to extend blade life.
- Corrosion-resistant Tru-zero end hook for accurate measurements.
- Secure blade lock that won't creep.



ITEM NO.	DESCRIPTION	1	4	12	24	48
340111	3/4" x 16'	\$13.18	\$12.44	\$11.79	\$11.20	\$10.67
340114	1" x 25'	22.66	21.40	20.28	19.26	18.35

POWERLOCK® 10' Pocket Tape Measure

STANLEY

- Very convenient pocket tape measure!
- 1/4" by 10' steel blade and silver case.
- Features a diameter scale marked on the blade, to permit accurate measurement of pipe thickness etc.



ITEM NO.	DESCRIPTION	1	6	12	24	48
340101	10' pocket tape	\$5.66	\$5.35	\$5.07	\$4.81	\$4.58

6" Pocket Clip Rule

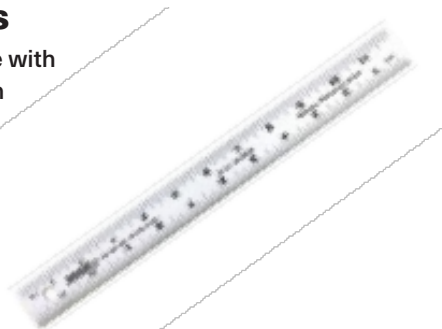
- Stainless steel rule with a pocket clip.
- Conversion tables on back side.



ITEM NO.	DESCRIPTION	1	5	10	20	50
340340	1/32 & 1/64 markings	\$3.46	\$3.26	\$3.09	\$2.94	\$2.80
340343	1/64 & mm markings	3.46	3.26	3.09	2.94	2.80

Aluminum Rules

- Extruded aluminum rule with screened graduations in 1/8" and 1/16".
- Width: 1-1/8".
- 10 per case.



ITEM NO.	DESCRIPTION	1	10	20	50
340314	12" x 1-1/8" ruler	\$1.79	\$1.69	\$1.61	\$1.53
340321	18" x 1-1/8" ruler	1.82	1.82	1.72	1.64
340328	24" x 1-1/8" ruler		1.94	1.84	1.75
340335	36" x 1-1/8" ruler	2.72	2.57	2.43	2.31

MAGTITE® Magnetic Tape Holster



- Just remove the metal clip on the back of your tape measure and follow the simple instructions on package to have a convenient magnetic holster for your tape measure.
- Fits all tapes from 16 ft to 35 ft.



ITEM NO.	DESCRIPTION	1	6	12	18	24
259955	MAGTITE Holster	\$13.97	\$13.19	\$12.50	\$11.88	\$11.31

Magnetic Welder's Torpedo Level



- Features rare earth magnets that are 5 times stronger than strip magnets.
- The solid block acrylic level vials never fog or leak.
- Die cast durable frame. JobSite Tough™
- V-groove edge fits on pipe or conduit.



ITEM NO.	DESCRIPTION	1	4	8	16
340350	10" torpedo level	\$21.12	\$19.94	\$18.89	\$17.95